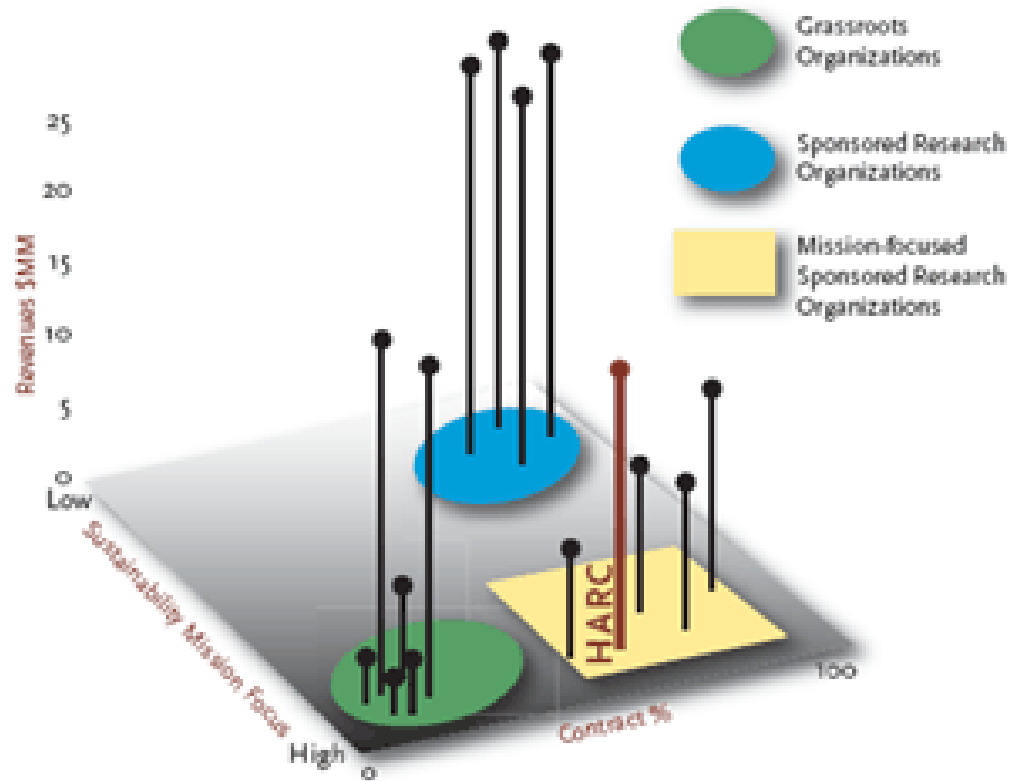




Performance Measures or Indicators: Methods for Evaluating Transportation Policy Effectiveness

Jennifer Ronk and David Hitchcock
Houston Advanced Research Center

◀ | H | A | R | C | ▶



Indicators



Milton trading Co

Indicators vs. Performance Measures



vs.



Challenge

- How we can use other indicator experience at HARC and relate it specifically to transportation and sustainability issues



Good Indicators \neq Good Policy



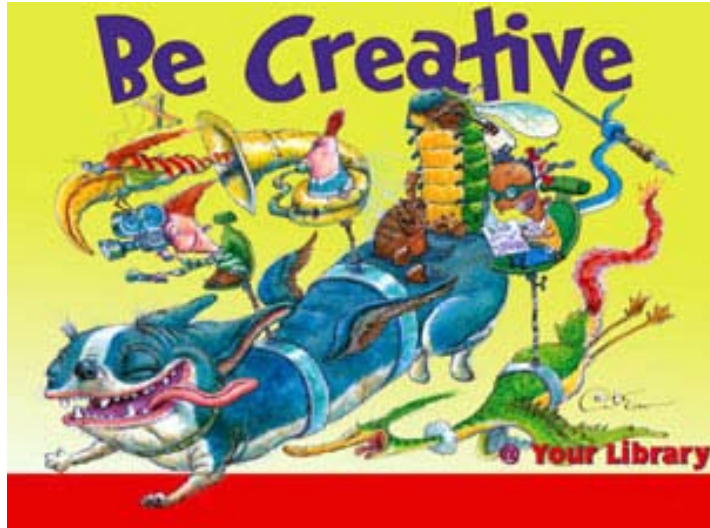
“Policymaking often relies on generalized observations, best guesses, and ‘expert opinion’ – or, worse yet, rhetoric and emotion.”

-Dan Esty

Step 1 – Indicator research

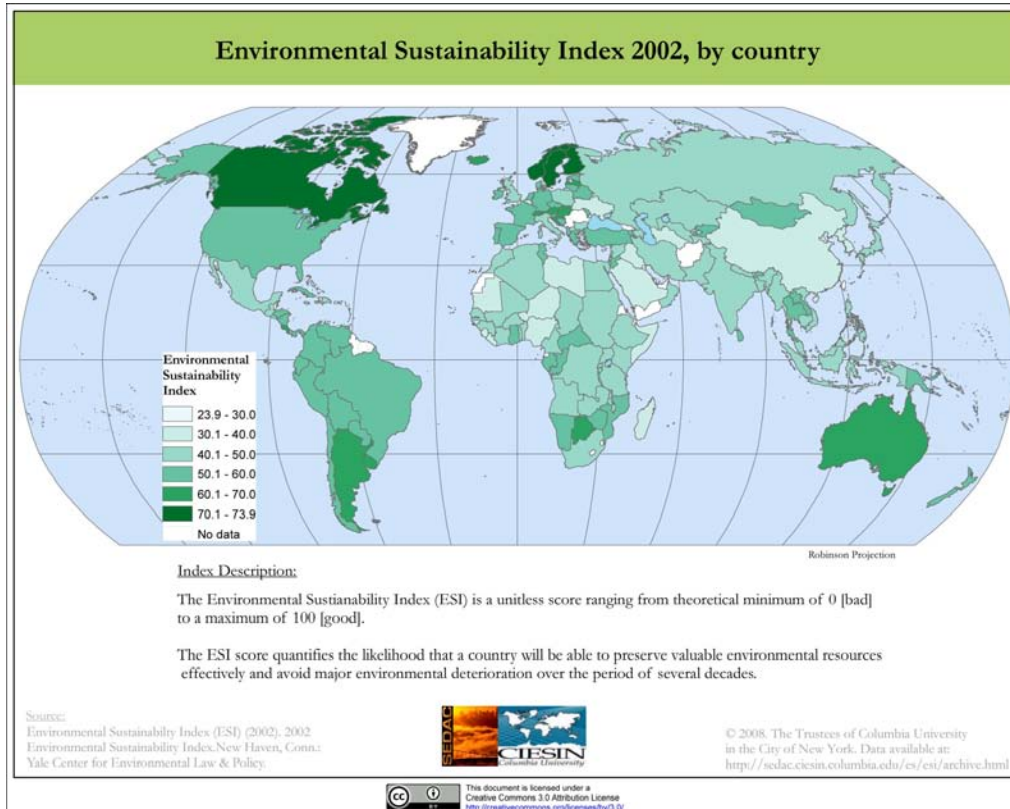
- HARC's indicator research in other fields
- Georgia Tech - Performance Measurement Frameworks and the Development of Effective Sustainable Transport Strategies and Indicators
- TTI's numerous indicator projects
- EU research
- Many, many, more

Step 2 – Measure what matters



We need more
data driven ways
of selecting
indicators

Step 3 - Benchmarking



What
policies are
used in
places
highly
ranked
placed?



Thanks!

Jennifer Ronk

Research Scientist

jronk@harc.edu

David Hitchcock

Director, Sustainable Transportation

dhitchcock@harc.edu